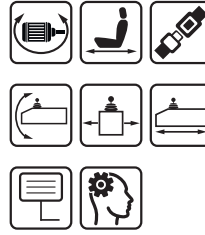


FSMMD_{ultra}

Optimal for multi-shift operation.



The control station FSMMDultra was specially developed for applications with the highest demands on ergonomics and adjustment options. Its large adjustment travels for the seat and side desks allow the operator to work both sitting and standing. Electrically adjustable seat and console positions can be easily saved by the operator using the standard integrated memory control. The generously designed memory control allows 30 operators to save 5 desired settings each. Comfortable and fatigue-free work is supported by the combination of the control station base with comfort seats from the SPOBU product

portfolio. Slim, generously dimensioned side consoles with a special design offer plenty of space for the installation of joysticks and control devices, monitors can optionally be integrated or attached laterally via arms.

The colour concept completes the steering position in terms of appearance and value. Delivered without built-in components or completely wired with built-in control devices, this control station is particularly suited to the high demands of 3-shift operation.

Basic version
Control station base

Adjustments:**Seat position**

electrical height adjustment

mechanical longitudinal adjustment

Side consoles

electrical height, length and tilt adjustment

additional mechanical longitudinal adjustment

mechanically swiveling inwards

optionally mechanically adjustable armrest

Footrest

electrical height adjustment

electric footrest incline adjustment

mechanically tiltable and foldable bull horns

Rotary motion

electrical rotation +/- 120°

Side consoles

sloped side consoles, dimensions see TI-FSMMD-4/4

Extension plates RAL 7016 anthracite gray for installing command devices, without holes / cutouts, with arm pad for armrest, optionally with adjustable armrest AS1-30

Seat

with comfortseat S722-S-TN with upholstery cotton black with passive climate system, headrest, lumbar support, mechanical seat cushion depth and tilt adjustment, mechanical longitudinal adjustment; optionally other seats

Suspension

pneumatic suspension with integrated compressor (24 VDC) for comfort seat

Dimensions, adjustment travels, angles

Control station see TI-FSMMD-1/4 Mounting holes see TI-FSMMD-2/4

Side consoles see TI-FSMMD-4/4 Monitor mounting, standing operation see TI-FSMMD-3/4

Electric

Rocker switch for the electrical adjustment options

Memory control for electric seat height, side desk, footrest adjustment and rotary movement for a maximum of 30 operators, 5 adjustment positions can be saved per operator. Control unit built into the right console, control built into the rear control cabinet.

electrical connection: 24 VDC - 20 A and 230 VAC

Options

Electrical travel unit for control stations

Travel range +- 200 mm (forward-backward)

Layout insert plates

Seats

Other seats

Joysticks, control devices

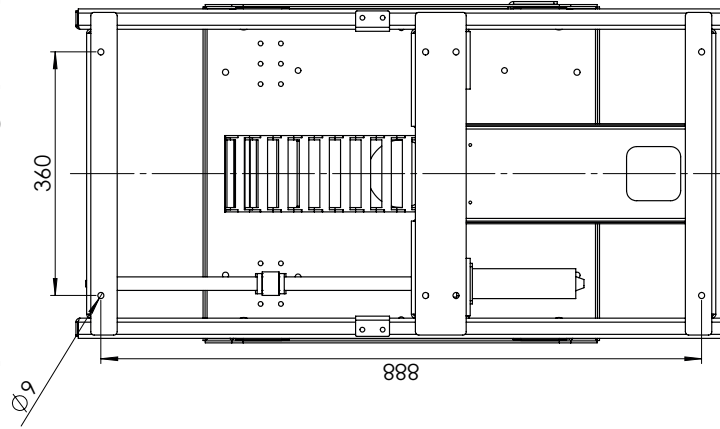
Internal electrical wiring of command devices on terminal block

Extended side consoles on the front for monitor installation

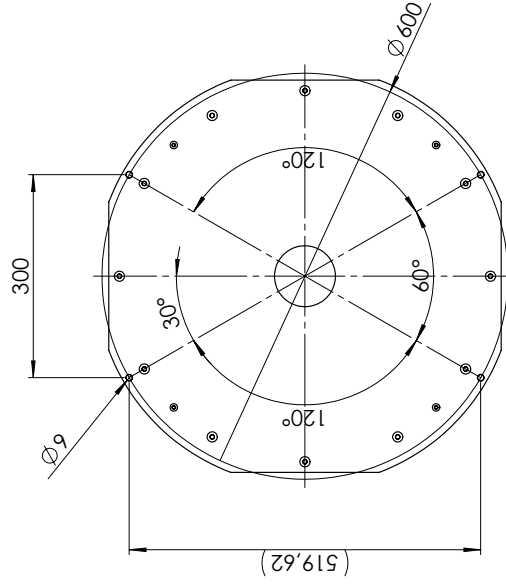
Monitor attachment via side monitor arm, mechanically swiveling

Montagebohrungen (mounting holes)

elektrischer Verfahrerschlitten (+200mm)
(motorized sliding system)

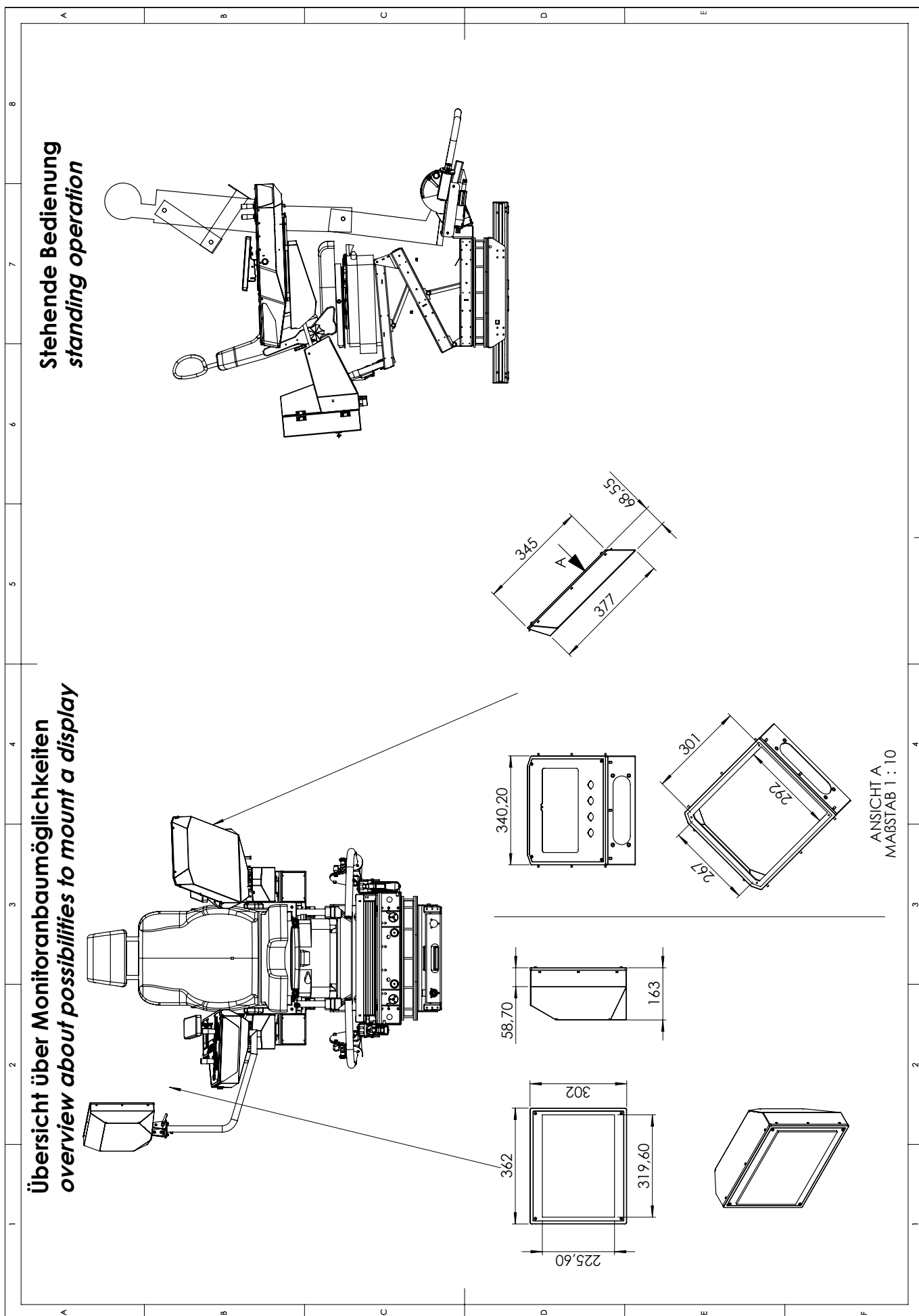


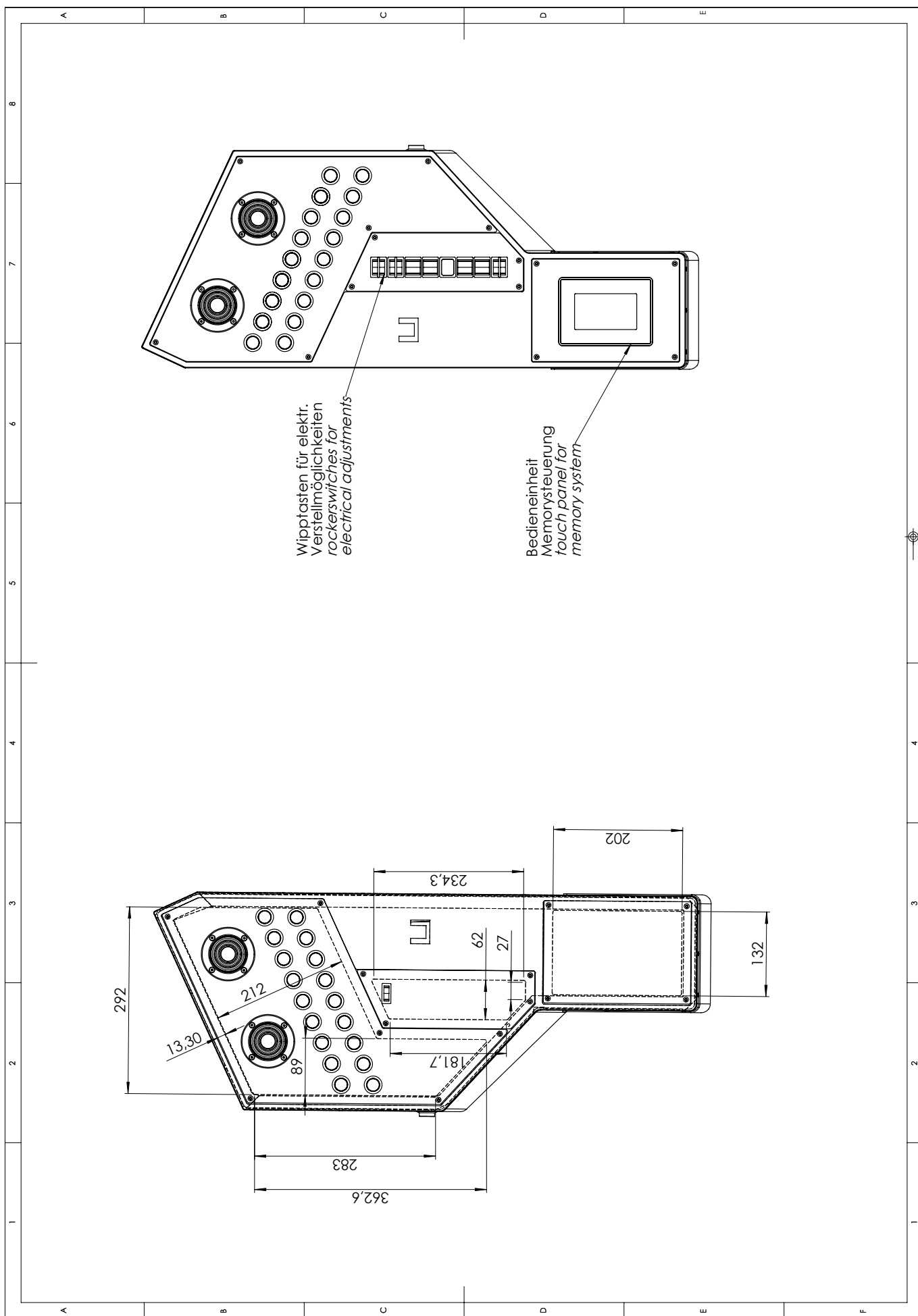
elektrischer Drehkranz ($\pm 120^\circ$)
(motorized swing bearing)



Für die Montage M8 (8.8) Schrauben mit einem Anziehdrehmoment von 24Nm verwenden
(for mounting use M8 (8.8) screws with torque of 24Nm)

Rev





Wipptasten für elektr.
Verstellmöglichkeiten
rockerswitches for
electrical adjustments

Bedieneinheit
Memorysteuering
touch panel for
memory system